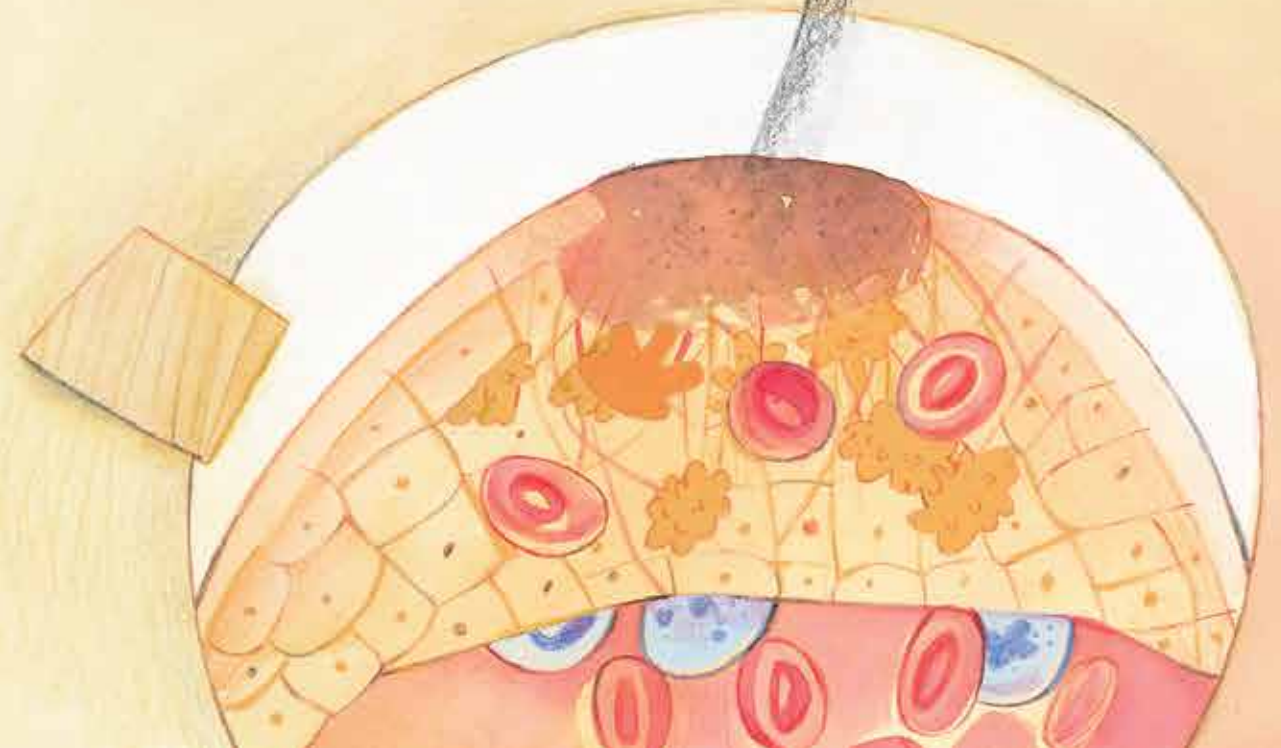


## other jobs the blood does

**W**hite blood cells patrol the entire circulatory system, like the traffic police. If they find an intruder—like a microbe—they are in charge of removing it so it can't hurt you. They help protect you so you don't get sick. The platelets have a different role: when you fall and cut yourself, they are in charge of covering it so that you don't lose blood, and they help form a scab. When the wound is healed, the scab falls off. Thanks, platelets!





# Different teeth for different jobs

Have you ever seen a dolphin with its mouth open? If you could look closely, all of its teeth are the same. Now open your mouth and look at your teeth in a mirror. Are they all the same? No! They are different, because each different type of tooth has a different job. Your incisors cut food; you use your canine teeth (or eyeteeth) to hold food like meat; and premolars and molars are in charge of chewing all the food well before you swallow it.



Incisor

Canine

Premolar

Molar





# Mealtime: fuel for our bodies

In order for your body to grow, all your cells to have energy and all your muscles (as well as especially your brain) to be strong and ready, you need to eat. Digestion starts in the mouth, when your teeth are chewing the food and mixing it with saliva. When it is totally chewed up, we swallow it. It moves down a tube, the esophagus, and enters the stomach. This bag-shaped organ is where the food is broken down and digested.

